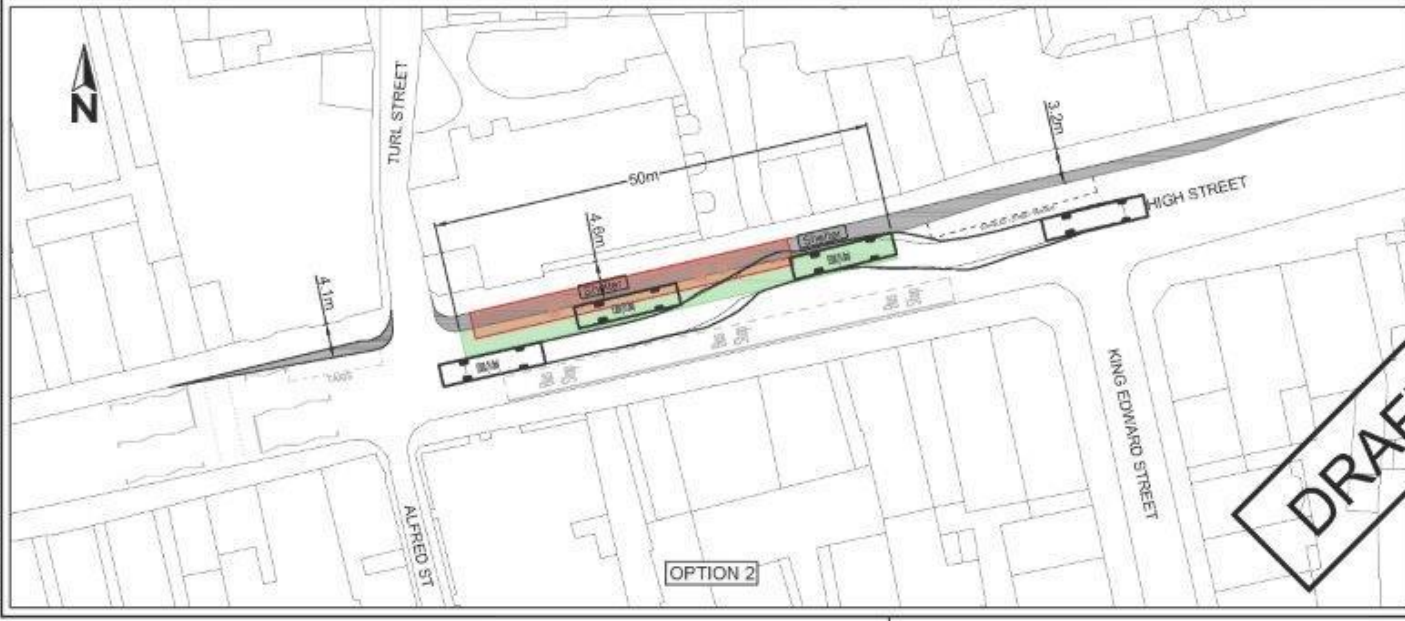


OPTION 1



OPTION 2

Drawing No. S-000700-066-FEA-000-012 Revision 3

- KEY:**
- Existing bus stop to be removed
 - Proposed bus stop
 - Proposed footway build-out

- NOTES:**
1. Vehicle used for tracking is E200 (11.8m)
 2. All dimensions and clearances are indicative as the drawings (incl. vehicle tracking) are based on Ordnance Survey mapping. Any further design work would require a topographical survey.

SAFETY, HEALTH AND ENVIRONMENTAL INFORMATION

IN ADDITION TO THE DUTIES NORMALLY ASSOCIATED WITH THE TYPE OF WORK DETAILING ON THIS DRAWING, NOTE THE FOLLOWING POINTS PERTINENT TO THIS PROJECT:

CONSTRUCTION
FEASIBILITY STAGE THEREFORE NOT APPLICABLE

OPERATION/MAINTENANCE
FEASIBILITY STAGE THEREFORE NOT APPLICABLE

USE
FEASIBILITY STAGE THEREFORE NOT APPLICABLE

OPERATIONAL CONFORMANCE, ETC.
FEASIBILITY STAGE THEREFORE NOT APPLICABLE

© Crown Copyright and Database rights 2015 100020340

Rev	Date	Purpose of revision	Drawn	Checked	Approved
1	21.01.16	Initial release	SAC	EA	EA
2	17.02.16	Revised to include bus stop relocation	SAC	MW	MW
3	13.04.16	Revised to include bus stop relocation and footway build-out	SAC	MW	MW

Mark Kemp
Senior Civil Engineer
Oxfordshire County Council
Infrastructure and Planning
Department
Oxford
OX1 1BE
Tel: (01865) 810700
Fax: (01865) 261877

Project title
City Centre Bus Stops
Connection to Oxford Station
(Including Queen Street)

Drawing title
High Street
New Bus Stops

Drawing Status

FEASIBILITY			
Scale @ A3	Drawn by	Checked by	Approved by
1:500	SAC	MW	EA
	Date drawn 7.1.16	Date checked 20.01.16	Date approved 20.01.16

Oxfordshire Project No. & File Ref
S-000700-066

Drawing No. S-000700-066-FEA-000-012 Revision 3

